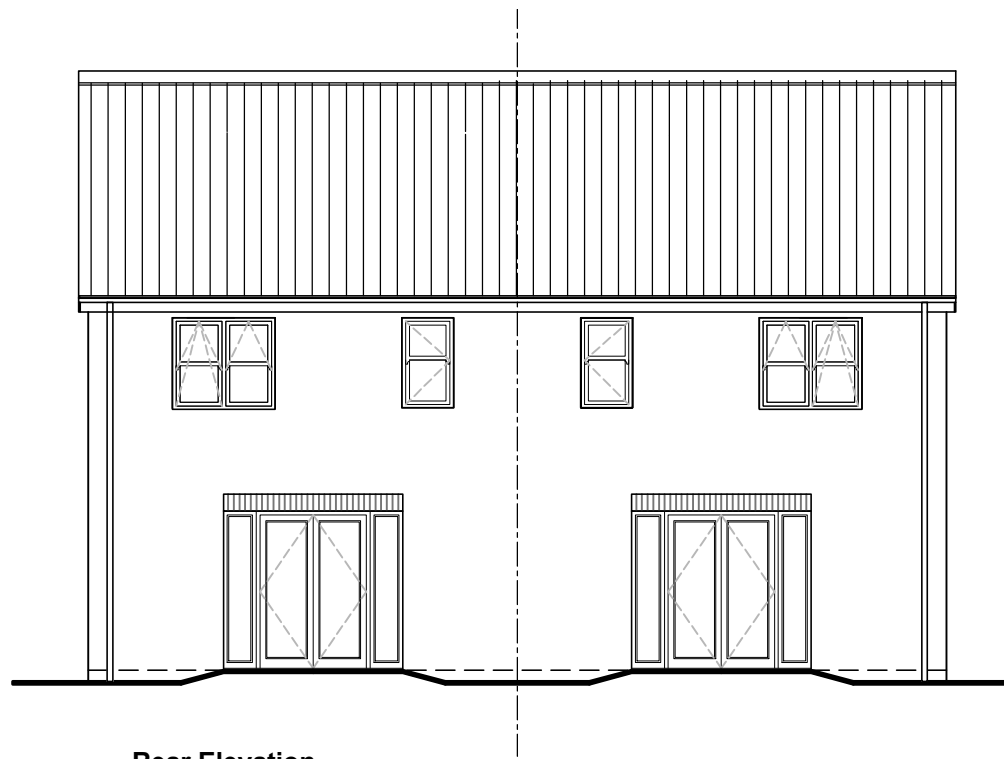
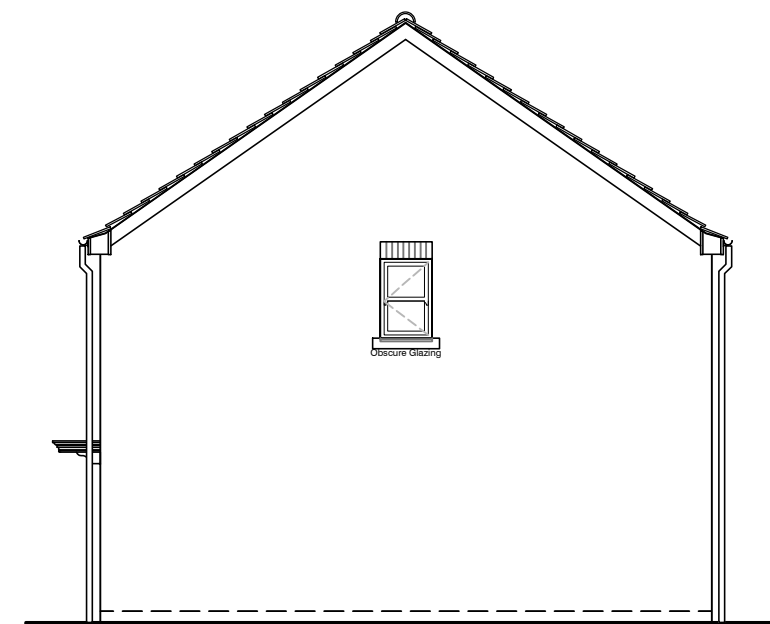


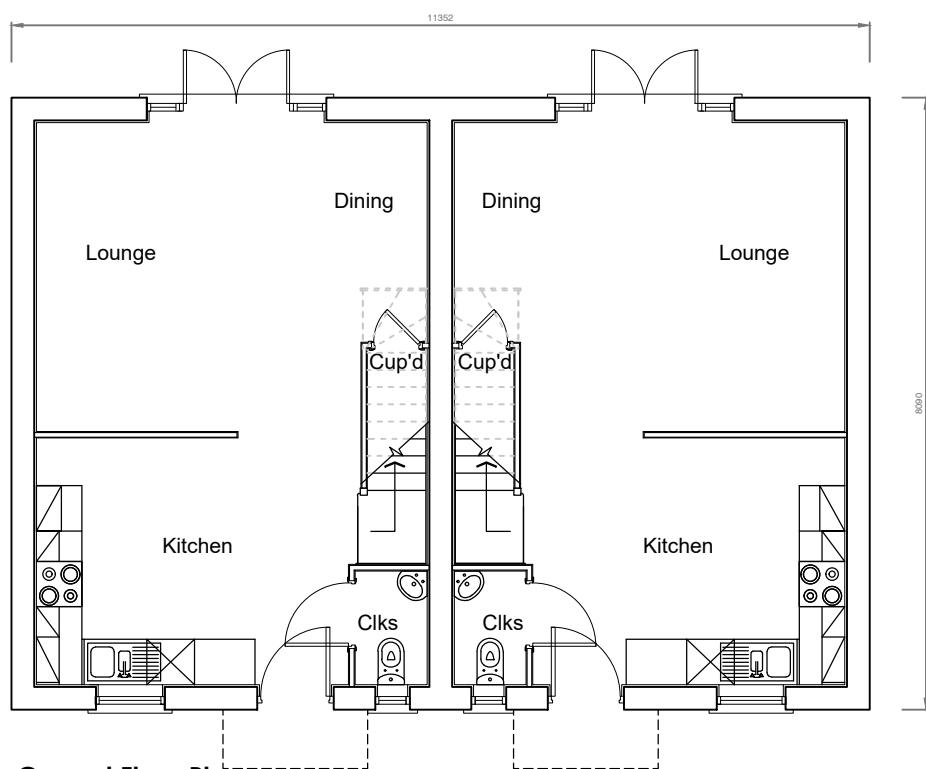
Front Elevation



Rear Elevation

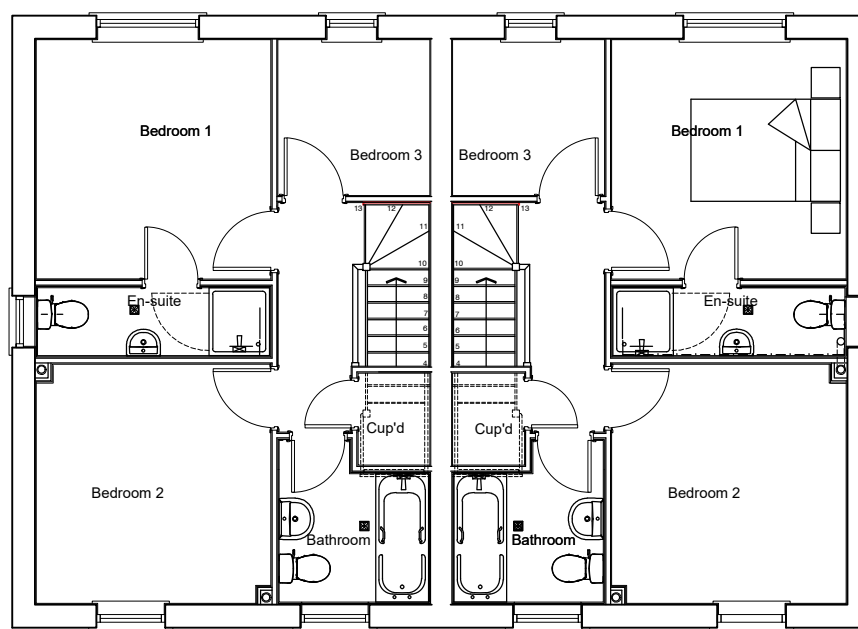


Right Elevation

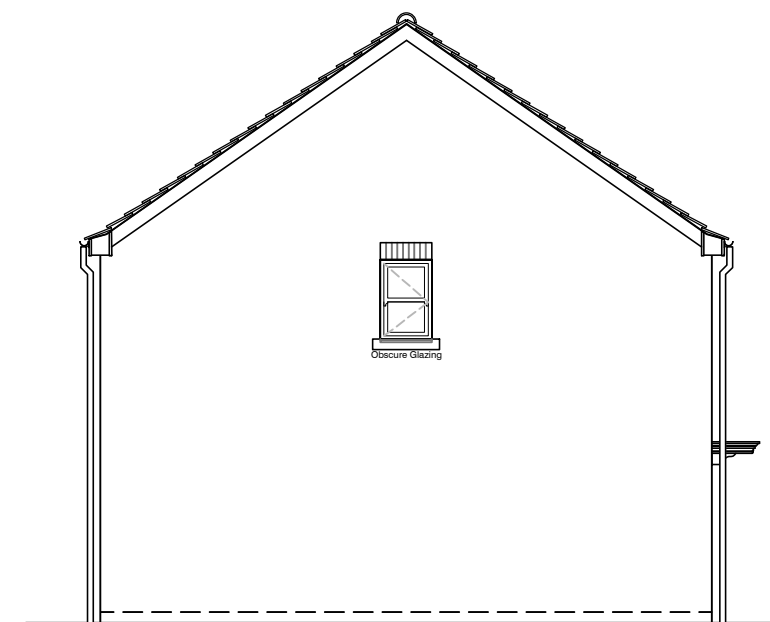


Ground Floor Plan

Area to Blockwork = 78.25m² (842sq ft) (per unit)
Area to Plasterboard = 76.6m² (826sq ft)



First Floor Plan



Left Elevation

Type 925-V4 - Floor Plans & Elevations

Dwg. No. Planning 925-V4 - 01 Scale 1-100 @ A3 November 2020